



IMAGE SOURCE

Medical Imaging Science Department
Fall 2003

Highlights

Pathology Review

Page 1

Featured Projection

Page 2

Program News

Page 3

Cancer in R.T.'s

Page 4

Student Corner

Page 4

The faculty and staff of the Medical Imaging Science

Department would like to extend our very best wishes for a happy and healthy holiday.



PIEDMONT CHAPTER of the SCSRT

The Piedmont Chapter of the SCSRT held their Fall Meeting on October 18, 2003. Featured speaker was Gary Randle, M.S., R.T.(R), an instructor and the clinical coordinator at Fayetteville Technical College in North Carolina. Topics included legal issues, pathology and CT. Over 60 technologists

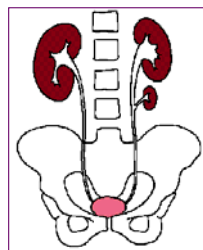
were in attendance along with many current radiography program students. Six CE category "A" credits were awarded. A one year Membership includes 12 CE's/year at Saturday seminars. Yearly Dues: Limited & General Radiographer: \$20.00 Student & Supporting Member: \$4.00



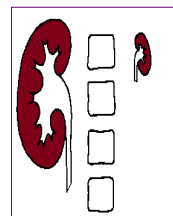
Gary Randle and Chapter president Pam Anthony enjoy a break before the next session

PATHOLOGY REVIEW

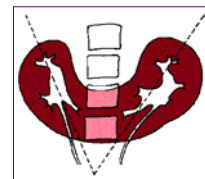
Can you identify the following anomalies of the urinary system?



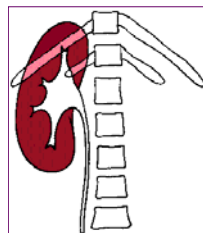
A



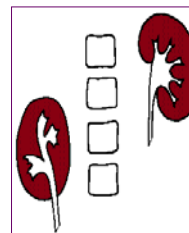
D



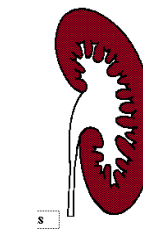
G



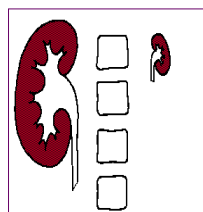
B



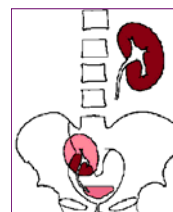
E



H



C



F



Answers page 2

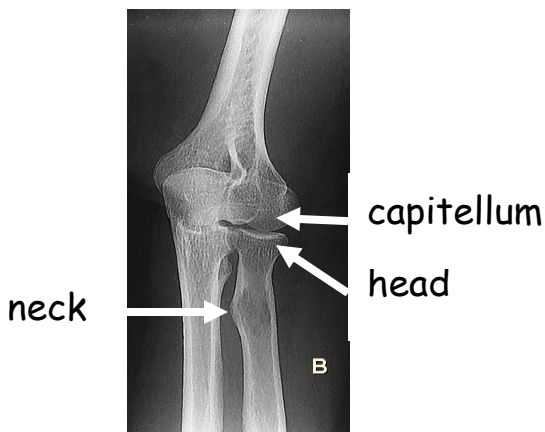
FEATURED PROJECTION: COYLE TRAUMA ELBOW

By: Joyce Hunter

"In trauma cases the patient often cannot extend their elbow for routine oblique images. The Coyle trauma projections demonstrate the intended anatomy when the elbow is in the lateral position."

NORMAL IMAGING

The external oblique demonstrates the radial head, neck and capitellum in profile.



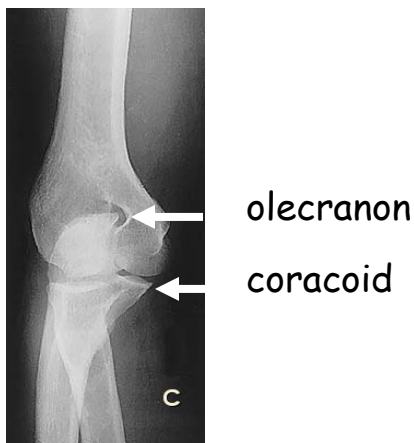
"COYLE" ALTERNATIVE IMAGING

Coyle (external oblique alternative) the flexed forearm is pronated and the elbow is centered to the cassette; the CR is directed 45 degrees toward the shoulder to the elbow

capitellum head



The **internal oblique** demonstrates the coracoid process in profile and the olecranon process resting in its fossa.



Coyle (internal oblique alternative)- the flexed forearm is pronated and the elbow is centered to the cassette; the CR is directed 45 degrees away from the shoulder to the elbow.

coracoid



- ANSWERS** A. Supernumerary kidney B. Agenesis C. Compensatory Hypertrophy D. Hypoplasia/Dysplasia
E. Rotational Anomaly F. Ectopic Kidney G. Renal Fusion "Horseshoe Kidney" H. Polycalycosis
I. Megacalyces

RADIOGRAPHY PROGRAM NEWS & UPDATES



RAD PROGRAM We currently have 20 senior and 33 junior students in the AS degree program. Three students currently in the LGR program have applied for bridging into the AS program in January.

LIMITED GENERAL RADIOGRAPHY Five students are nearing the end of the LGR program with graduation expected in December 2003. The January 2004 class had over 40 applicants of which 16 were seated. In an effort to retain students, a weighted admissions policy will go into effect with the January 2005 class selection. This process is valuable in decreasing

attrition rate and increasing program completion.

RAD152 FALL SEMESTER A reminder of lab procedures passed by junior students; Chest, Abdomen, Upper extremity complete, Lower extremity excluding femur, hip and pelvis.

AFFILIATES Hillcrest Family Practice has come on board as a clinical site for students honing their skills in patient assessment, history taking and vital signs. Donna Vaughn and Nancy Mahoney, both LPN's and Limited General Radiographer graduates from our program are the Clinical Instructors.

CLINICAL EVALUATOR CERTIFICATION Thank you to all technologists who have given their time to become Certified Evaluators of clinical competency in the RAD program. The next certification class will be held during the Spring Semester 2004. A flyer will be sent to all clinical sites.

C. T. PROGRAM The new program in Computed Tomography began on Sept. 22, 2003 and continues through April 29, 2004. Ten students are currently registered. One student is from Chicago, one from Myrtle Beach and others are from Anderson-Greenville- and Spartanburg.

Inquires into the CT program came from over 25 different states including California, Michigan, Florida, Texas and Maine. There is a great demand from Registered Radiologic Technologists for advance registry programs such as CT. The new CT program at Greenville Technical College strives to meet this need. For more information contact Program Coordinator Michael Dyches michael.dyches@gvltec.edu

NEW FACULTY EMAIL The faculty has been given new email addresses. Type in the faculty first name, a dot (.) then the last name followed by (.) @ gvltec.edu.

Example:
jan.hirt@gvltec.edu

MAMMOGRAPHY PROGRAM

Five radiographers are taking the mammography online courses this fall. The online courses are taught in 4 week blocks. Radiographers can take the didactic courses to meet the FDA requirements to do mammography, to take the ARRT exam in mammography or for continuing education credits. Successful completion of each 1 credit hour

course is awarded 16 Category A credits by the ARRT. **The next class begins January 16, 2004.** For more information please visit the program web page at <http://www.greenvilletech.com/Academics/mammography.html> and contact Program Coordinator Judy Speer BS, R.T. (R) (M) Phone: (864) 250-8108 judy.speer@gvltec.edu

Congratulations to May 2003 radiography program graduates, Kim Bergmann and Alicia Landreth. Both completed the full certificate mammography program this summer.



Kim Bergmann



Alicia Landreth





It is with sadness that the faculty said "Bon Voyage" to Sonography Program Coordinator **Tami Salsgiver**. Tami took an instructor position in the beautiful state of California.

Students and faculty will miss her professional skills, ultrasound expertise and friendship.

FYI Study of cancer in R.T.'s vs the general population

104,000 radiographers were surveyed who averaged 12 years experience and had less than 1 Rad of monitored exposure. The comparison is per 100,000.

INCIDENCE OF CANCER	RADIOGRAPHERS	GENERAL POPULATION
Skin	1517	?
Cervical	726	8
Breast	665	119
Uterine	242	23
Thyroid	220	3.8
Lung	76	50
Leukemia	42	10
OVERALL RATE	3.6%	0.36%

Data: Practical Radiation Protection & Applied Radiography, Steven Dowd 1994

STUDENT CORNER



Students enjoy the Piedmont seminar: Clockwise from top left; Phyllis Stone, Ada Courtney, Allison Benyona, Sherry Schmidt, Elizabeth Keith, Ashley Burkhardt, Felicia McCoullough, Kim Hughes, Andrea Burton, Clorissa Sullivan, Stephanie Hyneman and Teresa Sullivan.



L to R: Kim Hushes and Ada Courtney, LGR students assist senior RAD students Clorissa Sullivan, Sara Sanders and Stephanie Hyneman sell T-shirts and mugs. Proceeds help with graduation expenses.



What manual is THIS position in? Junior RAD student Brian Cole enjoys a break from the rigors of "fast track" positioning lab. Another KODAK moment....